

PTFE Fittings



How to Order

Uni-Lok PTFE Tube Fittings are ordered by part number as shown Index.

Size : Tube and pipe thread size are designated by the number of sixteenths of an inch and metric size.

Type : A letter or combination of letters and numbers are used to designate the type of fittings.

Material : PTFE

Features

Temperature rating from 20°C (70°F) to 232°C (450°F)

Working pressure : Max 275 psig (18.9 bar)

Size : Fractional 1/8" ~ 1", Fractional 6mm ~ 25mm, Special Variation Available

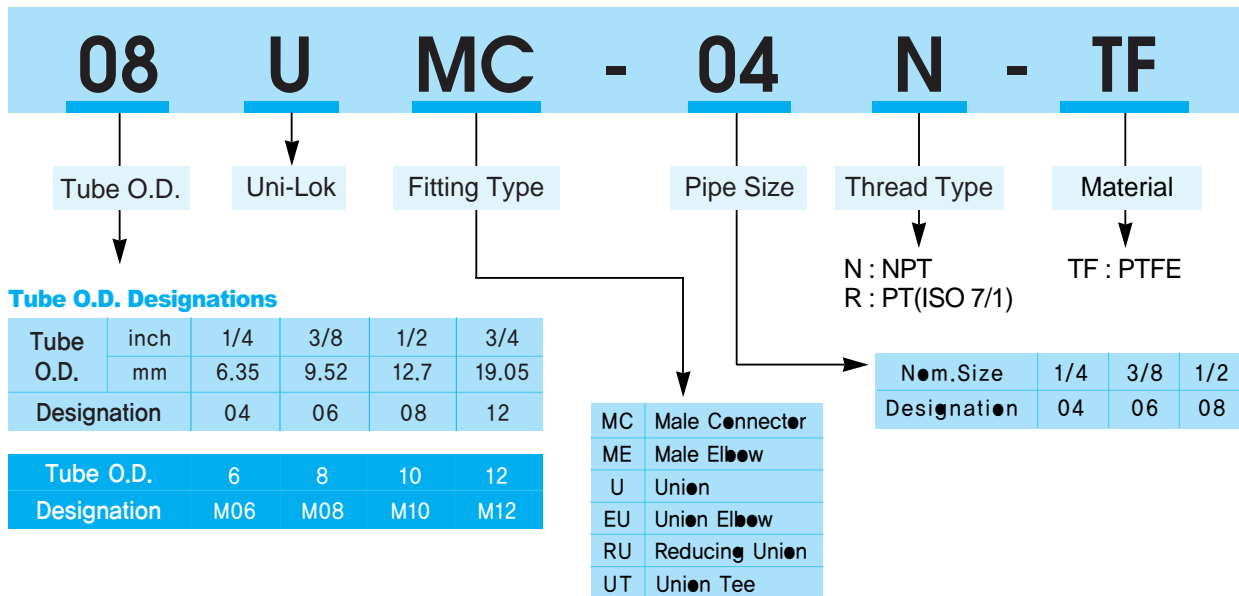
Pressure - Temperature Ratings

Fractional Tube Fittings and Tubings

| Tubing Wall in. | Fittings and Tubing | | | | |
|---------------------|-----------------------------|------------|------------|------------|-----------|
| | 0.030 | 0.047 | 0.062 | | |
| Size, in. | 1/8 | 1/4 | 1/4 | 3/8 | 1/2 |
| Temperature °C (°F) | Working Pressure psig (bar) | | | | |
| 20 (70) | 275 (18.9) | 200 (13.7) | 275 (18.9) | 180 (12.4) | 125 (8.6) |
| 37 (100) | 245 (16.8) | 180 (12.4) | 245 (16.8) | 155 (10.6) | 115 (7.9) |
| 93 (200) | 145 (9.9) | 110 (7.5) | 145 (9.9) | 93 (6.4) | 68 (4.6) |
| 148 (300) | 87 (5.9) | 64 (4.4) | 87 (5.9) | 48 (3.3) | 32 (2.2) |
| 204 (400) | 47 (3.2) | 34 (2.3) | 47 (3.2) | 11 (0.75) | 11 (0.75) |

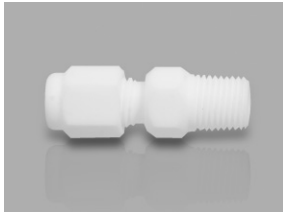
Metric Tubing

| Tubing Wall in. | 1 | | 1.5 | |
|---------------------|-----------------------------|-----------|-----------|-----------|
| | Size, in. | 6 | 8 | 6 |
| Temperature °C (°F) | Working Pressure psig (bar) | | | |
| 70 (20) | 12 (174) | 8.9 (129) | 19 (275) | 14 (203) |
| 122 (50) | 9.7 (140) | 7.1 (103) | 15 (217) | 11 (159) |
| 212 (100) | 6.1 (88) | 4.4 (63) | 9.5 (137) | 6.9 (100) |
| 302 (150) | 3.8 (55) | 2.5 (36) | 5.9 (85) | 4.0 (58) |
| 392 (200) | 2.2 (31) | 1.3 (18) | 3.4 (49) | 2.0 (29) |



Male Connector

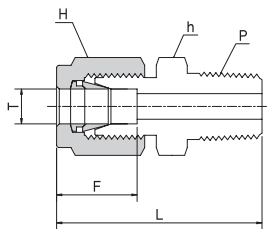
UMC



Connects Inch Tube to Female ISO Tapered Thread

| Part No. | Tube O.D. T | P R(PT) | E | h | H | F | L |
|--------------|----------------|------------|------|-------|-------|------|------|
| 04UMC-04R-TF | 1/4 | 1/4 | 4.8 | 15.87 | 15.87 | 15.2 | 39.1 |
| 06UMC-06R-TF | 3/8 | 3/8 | 7.0 | 20.63 | 20.63 | 17.0 | 40.6 |
| 08UMC-08R-TF | 1/2 | 1/2 | 10.0 | 25.40 | 25.40 | 22.9 | 49.0 |

Connects Metric Tube to ISO Tapered Thread



| Part No. | Tube O.D. T | P R(PT) | E | h | H | F | L |
|---------------|----------------|------------|-----|-------|-------|------|------|
| M06UMC-04R-TF | 6.0 | 1/4 | 4.8 | 15.87 | 15.87 | 15.2 | 39.1 |
| M08UMC-04R-TF | 8.0 | 1/4 | 6.4 | 17.46 | 17.46 | 16.2 | 39.5 |
| M10UMC-06R-TF | 10.0 | 3/8 | 8.0 | 19.05 | 19.05 | 17.2 | 41.0 |
| M12UMC-08R-TF | 12.0 | 1/2 | 9.5 | 25.40 | 25.40 | 22.9 | 49.0 |

Male Elbow

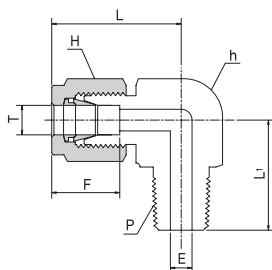
UME



Connects Inch Tube to Female ISO Tapered Thread

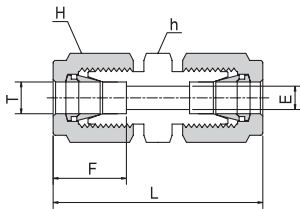
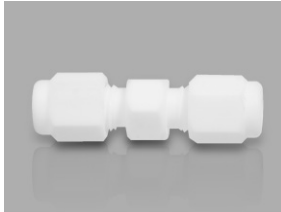
| Part No. | Tube O.D. T | P R(PT) | E | h | H | F | L | L ₁ |
|--------------|----------------|------------|------|-------|-------|------|------|----------------|
| 04UME-04R-TF | 1/4 | 1/4 | 4.8 | 15.87 | 15.87 | 15.2 | 28.7 | 24.4 |
| 06UME-06R-TF | 3/8 | 3/8 | 7.0 | 20.63 | 20.63 | 17.0 | 31.2 | 26.2 |
| 08UME-08R-TF | 1/2 | 1/2 | 10.0 | 25.40 | 25.40 | 22.9 | 36.8 | 33.8 |

Connects Metric Tube to Female ISO Tapered Thread



| Part No. | Tube O.D. T | P R(PT) | E | h | H | F | L | L ₁ |
|---------------|----------------|------------|-----|-------|-------|------|------|----------------|
| M06UME-04R-TF | 6.0 | 1/4 | 4.8 | 15.87 | 15.87 | 15.2 | 28.7 | 24.4 |
| M08UME-04R-TF | 8.0 | 1/4 | 6.4 | 17.46 | 17.46 | 16.2 | 30.1 | 25.1 |
| M10UME-06R-TF | 10.0 | 3/8 | 8.0 | 19.05 | 19.05 | 17.2 | 31.6 | 26.6 |
| M12UME-08R-TF | 12.0 | 1/2 | 9.5 | 25.40 | 25.40 | 22.9 | 36.8 | 33.8 |

Union UU



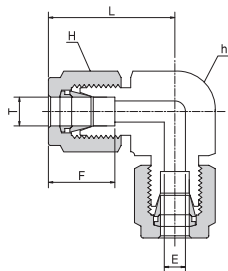
Connects Fractional Tube

| Part No. | Tube O.D. T | E | h | H | F | L |
|----------|----------------|------|-------|-------|------|------|
| 04UU-TF | 1/4 | 4.8 | 15.87 | 15.87 | 15.2 | 43.2 |
| 06UU-TF | 3/8 | 7.0 | 20.63 | 20.63 | 17.0 | 45.7 |
| 08UU-TF | 1/2 | 10.0 | 25.40 | 25.40 | 22.9 | 52.1 |

Connects Metric Tube

| Part No. | Tube O.D. T(mm) | E | h | H | F | L |
|----------|--------------------|-----|-------|-------|------|------|
| M06UU-TF | 6.0 | 4.8 | 15.87 | 15.87 | 15.2 | 43.2 |
| M08UU-TF | 8.0 | 6.4 | 17.46 | 17.46 | 16.2 | 43.5 |
| M10UU-TF | 10.0 | 8.0 | 19.05 | 19.05 | 17.2 | 46.5 |
| M12UU-TF | 12.0 | 9.5 | 25.40 | 25.40 | 22.9 | 52.1 |

Union Elbow UEU



Connects Fractional Tube

| Part No. | Tube O.D. T | E | h | H | F | L |
|----------|----------------|------|-------|-------|------|------|
| 04UEU-TF | 1/4 | 4.8 | 15.87 | 15.87 | 15.2 | 28.7 |
| 06UEU-TF | 3/8 | 7.0 | 20.63 | 20.63 | 17.0 | 31.2 |
| 08UEU-TF | 1/2 | 10.0 | 25.40 | 25.40 | 22.9 | 36.8 |

Connects Metric Tube

| Part No. | Tube O.D. T(mm) | E | h | H | F | L |
|-----------|--------------------|-----|-------|-------|------|------|
| M06UEU-TF | 6.0 | 4.8 | 15.87 | 15.87 | 15.2 | 28.7 |
| M08UEU-TF | 8.0 | 6.4 | 17.46 | 17.46 | 16.2 | 31.1 |
| M10UEU-TF | 10.0 | 8.0 | 19.05 | 19.05 | 17.2 | 31.6 |
| M12UEU-TF | 12.0 | 9.5 | 25.40 | 25.40 | 22.9 | 36.8 |

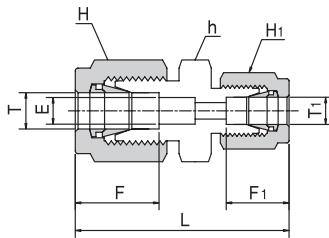
Reducing Union

URU



Connects Fractional Inch Tube

| Part No. | Tube O.D. | | E | h | H | Hi | F | Fi | L |
|-------------|-----------|-----|-----|-------|-------|-------|------|------|------|
| | T | T1 | | | | | | | |
| 06URU-04-TF | 3/8 | 1/4 | 4.8 | 20.63 | 20.63 | 15.87 | 17.0 | 15.2 | 45.0 |
| 08URU-04-TF | 1/2 | 1/4 | 4.8 | 25.40 | 25.40 | 15.87 | 22.9 | 15.2 | 48.5 |
| 08URU-06-TF | 1/2 | 3/8 | 7.0 | 25.40 | 25.40 | 20.63 | 22.9 | 17.0 | 49.3 |



Connects Metric Tube

| Part No. | Tube O.D. | | E | h | H | Hi | F | Fi | L |
|---------------|-----------|---------|-----|--------|-------|-------|------|------|------|
| | T (mm) | T1 (mm) | | | | | | | |
| M10URU-M06-TF | 10.0 | 6.0 | 4.8 | 100.00 | 19.05 | 15.87 | 17.2 | 15.2 | 45.4 |
| M12URU-M06-TF | 12.0 | 6.0 | 4.8 | 25.40 | 25.40 | 15.87 | 22.9 | 15.2 | 48.5 |
| M12URU-M10-TF | 12.0 | 10.0 | 7.0 | 25.40 | 25.40 | 19.05 | 22.9 | 17.2 | 49.7 |

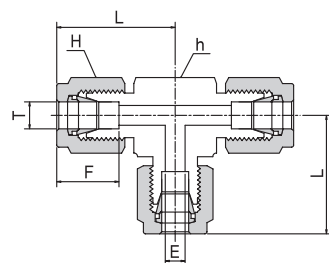
Union Tee

UUT



Connects Fractional Tube

| Part No. | Tube O.D. T | E | h | H | F | L |
|----------|----------------|------|-------|-------|------|------|
| 04UUT-TF | 1/4 | 4.8 | 15.87 | 15.87 | 15.2 | 28.7 |
| 06UUT-TF | 3/8 | 7.0 | 20.63 | 20.63 | 17.0 | 31.2 |
| 08UUT-TF | 1/2 | 10.0 | 25.40 | 25.40 | 22.9 | 36.8 |

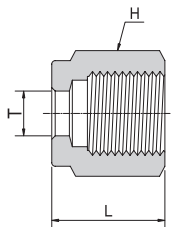


Connects Metric Tube

| Part No. | Tube O.D. T (mm) | E | h | H | F | L |
|-----------|---------------------|-----|-------|-------|------|------|
| M06UUT-TF | 6.0 | 4.8 | 15.87 | 15.87 | 15.2 | 28.7 |
| M08UUT-TF | 8.0 | 6.4 | 17.46 | 17.46 | 16.2 | 31.1 |
| M10UUT-TF | 10.0 | 8.0 | 19.05 | 19.05 | 17.2 | 31.6 |
| M12UUT-TF | 12.0 | 9.5 | 25.40 | 25.40 | 22.9 | 36.8 |

Nuts

UN



Connects Fractional Tube

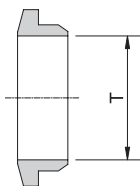
| Part No. | Tube O.D. (T) | | H | | L |
|----------|---------------|------|-------|-------|------|
| | in | mm | in | mm | |
| 04UN-TF | 1/4 | 6.35 | 15.87 | 15.87 | 16.5 |
| 06UN-TF | 3/8 | 9.52 | 20.63 | 20.63 | 17.3 |
| 08UN-TF | 1/2 | 12.7 | 25.40 | 25.40 | 20.1 |

Connects Metric Tube

| Part No. | Tube O.D. (T) | H | | L |
|----------|---------------|-------|-------|------|
| | T(mm) | in | mm | |
| M06UN-TF | 6.0 | 15.87 | 15.87 | 16.5 |
| M08UN-TF | 8.0 | 17.46 | 17.46 | 16.4 |
| M10UN-TF | 10.0 | 19.05 | 19.05 | 18.0 |
| M12UN-TF | 12.0 | 25.40 | 25.40 | 20.1 |

Back Ferrule

UBF



Connects Fractional Tube

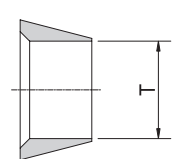
| Part No. | Tube O.D. (T) | |
|----------|---------------|------|
| | in | mm |
| 04UBF-TF | 1/4 | 6.35 |
| 06UBF-TF | 3/8 | 9.52 |
| 08UBF-TF | 1/2 | 12.7 |

Connects Metric Tube

| Part No. | Tube O.D. |
|-----------|-----------|
| | T(mm) |
| M06UBF-TF | 6.0 |
| M08UBF-TF | 8.0 |
| M10UBF-TF | 10.0 |
| M12UBF-TF | 12.0 |

Front Ferrule

UFF



Connects Fractional Tube

| Part No. | Tube O.D. (T) | |
|----------|---------------|------|
| | in | mm |
| 04UFF-TF | 1/4 | 6.35 |
| 06UFF-TF | 3/8 | 9.52 |
| 08UFF-TF | 1/2 | 12.7 |

Connects Metric Tube

| Part No. | Tube O.D. |
|-----------|-----------|
| | T(mm) |
| M06UFF-TF | 6.0 |
| M08UFF-TF | 8.0 |
| M10UFF-TF | 10.0 |
| M12UFF-TF | 12.0 |

LINE UP

Tube Fittings



Uni-primet Weld & Face Seal Fittings



PTFE Fittings



Diaphragm / Bellows Valve



Needle Valves



Ball Valves



Hex Ball Valves



Check Valves



Manifold Valves



Filters



TUBE/PIPE Clean BEND Fittings



Tubes AP/BA/EP





유니온금속공업(주)
UNION METAL INDUSTRIAL CO.,LTD.

본사 및 공장

인천광역시 남동구 고잔동 725-13번지
남동공단 152블럭 12롯트
TEL:(032)822-6600(대) FAX:(032)821-6604
<http://www.unilok.com>
E-mail : unilok@unilok.com

서울직매장

서울특별시 구로구 구로동 604-1
구로기계공구상가 D-31-110호
TEL:(02)2676-6673(대) FAX:(02)2679-6673

Head Office and Factory

152 Block-12Lot, Namdong Industrial Complex,
725-13, Gojan-Dong, Namdong-Gu, Incheon,
KOREA.
TEL:+82-32-822-6600 FAX:+82-32-821-6604
<http://www.unilok.com>
E-mail:unilok@unilok.com

Seoul Office

D-31-110, Guro Tools Center.
604-1, Guro-Dong, Guro-Gu, Seoul, KOREA.
TEL:+82-2-2676-6673 FAX:+82-2-2679-6673